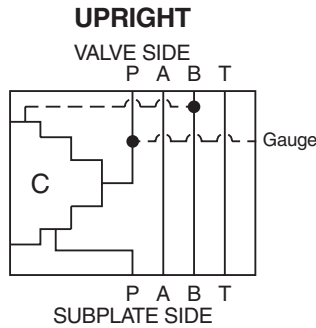


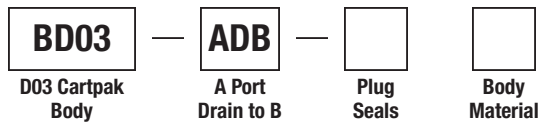
General Description

A Port Drain to B D03 Cartpak Body.
 For additional information see Technical Tips on pages CB1-CB3.

Body Schematic



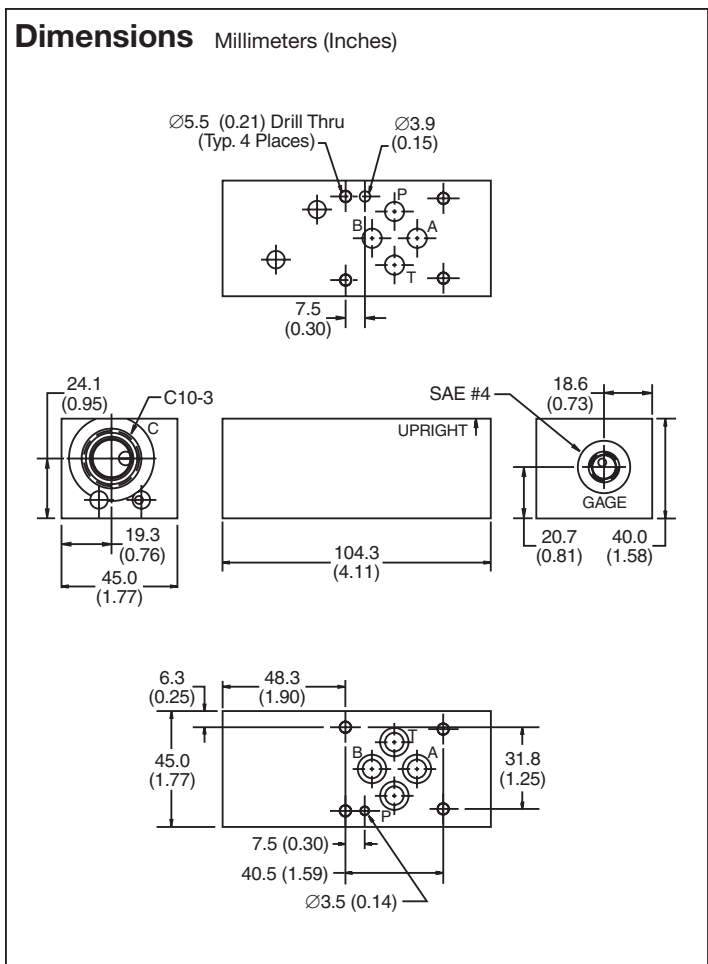
Ordering Information



Code	Plug Seals
Omit	Nitrile

Code	Body Material
A	Aluminum
S	Steel (Ductile Iron)

- Body supplied with:**
- Gage Port Plug Installed
 - O-Rings and Drive Pin

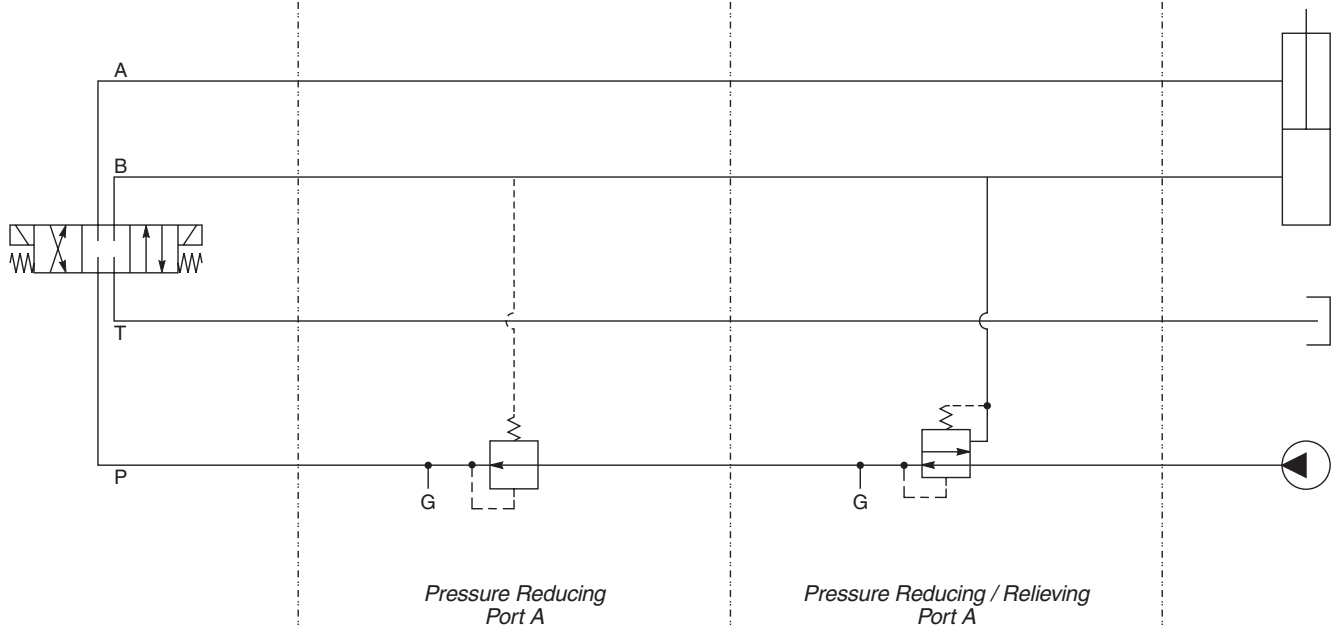


Cavity C: PRH102

Direction: Upright

Cavity C: PRH101
PR103

Direction: Upright



Pressure Reducing Port A

Pressure Reducing / Relieving Port A

- CV
- Check Valves
- SH
- Shuttle Valves
- LM
- Load/Motor Controls
- FC
- Flow Controls
- PC
- Pressure Controls
- LE
- Logic Elements
- DC
- Directional Controls
- MV
- Manual Valves
- SV
- Solenoid Valves
- PV
- Proportional Valves
- CE
- Coils & Electronics
- CB
- Cartpak Bodies
- BC
- Bodies & Cavities
- TD
- Technical Data